



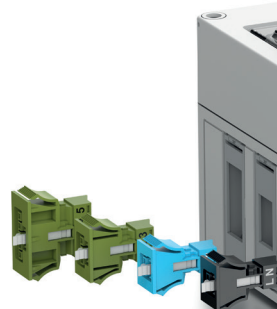
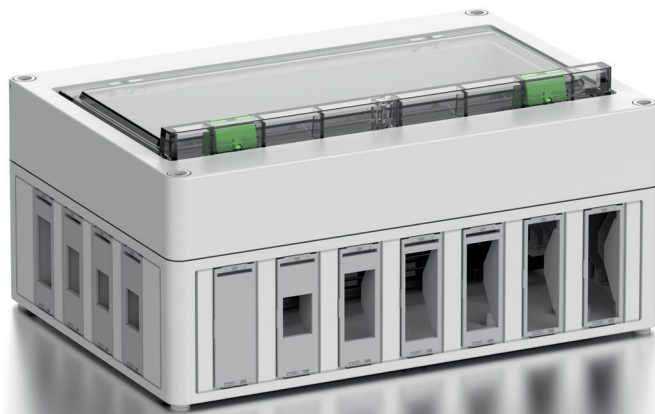
TKS enclosures | Plug & Play – Fast and safe installation



✦ The knockouts can be easily removed with a screwdriver.



✦ The adapter frame is inserted from the inside and locks to the enclosure by snapping into place.



## TKS enclosures | Plug & Play - Fast and safe installation

The new pluggable enclosures in the TKS series meet all the requirements of the building technology of tomorrow. Pre-assembled components that are precisely tailored to the individual application simultaneously enable both a high degree of safety and cost efficiency. This applies to office complexes, industrial facilities or exhibition halls.

Pluggable systems consist of pre-assembled components that simply have to be plugged together on site according to the Plug & Play principle. The individual components such as plugs, distributors or supply lines are planned and manufactured in advance on a project-specific basis. This minimises the installation effort on site.

The combination of simplicity, efficiency and safety makes pre-assembled enclosures the ideal solution for on-time construction. Plug & Play solutions meet both current and future requirements for modern building installations. They also offer an approach to counteracting the consequences of the shortage of skilled workers, because thanks to pre-assembly incorrect connections can be ruled out. This means that assembly can also be carried out by non-specialised personnel.

## PLUG-IN ENCLOSURES TKS

## TKS empty enclosures

IP30

IK07



690V  
AC



for mounting up to 26 adapter frames  
for WINSTA® plug connectors



## Advantages at a glance

### ■ Cost savings

Fast assembly, high quality and low susceptibility to faults.

### ■ Easy installation and maintenance

The Plug & Play solutions simply need to be plugged together on site.

### ■ High system security

Installation errors are practically eliminated by the mismatching protection. The factory-assembled and -tested cables offer maximum safety.

### ■ Consulting services

from our technical sales team

HOTLINE - Tel. +49 2355 892-155

### ■ Massive time savings

Pre-assembled cables and standardised pluggable connectors ensure particularly quick and easy installation on site.





## Pluggable electrical installations

An increasingly faster-paced world, calls solutions with maximum efficiency and 100% safety. That's why we have developed pluggable systems for fault-free electrical installations that fulfil all the requirements of tomorrow's building technology.

Installers benefit from the simple expandability of our systems, which meet the highest quality standards.

With our Plug & Play solutions, you can make your electrical installations fit for the challenges of the future.



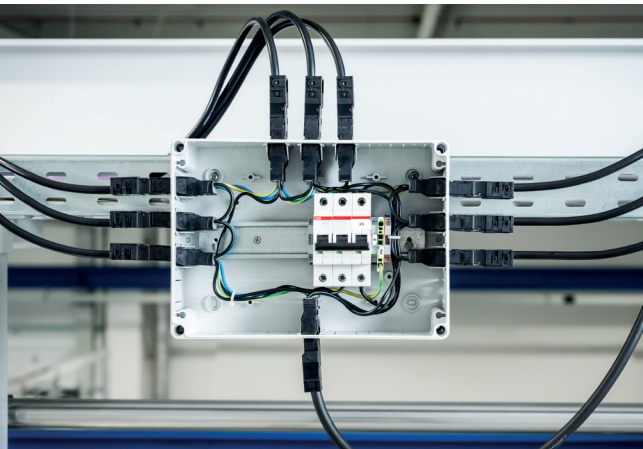
# PLUGGABLE ENCLOSURES TKS



Plug & Play solutions are simply plugged together on site.



Quick and easy installation



Simple implementation of sub-distribution boards, small control systems



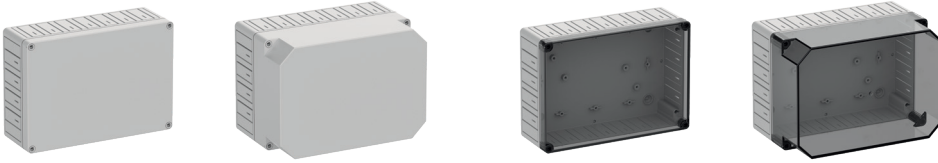
Mounting of up to 26 adapter frames for WINSTA® pluggable connectors

## For which applications are pluggable enclosures suitable?

The factory pre-assembled systems are particularly suited to efficient and on-time construction.

They are used in buildings with repetitive room layouts such as office buildings, hotels, hospitals, schools, daycare centres, care homes, exhibition halls, industrial facilities and shopping centres.

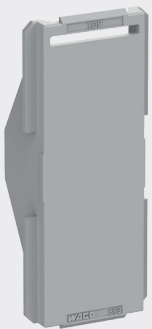
Typical applications include lighting installations in suspended ceilings, and electrical installations in wall ducts, cavity walls or in raised floors.



TKS 2518		TKS 2518		Dimensions
Enclosure type	Order No	Enclosure type	Order No	
TKS 2518-9-o	141 001 01	TKS 2518-9-to	142 001 01	254 x 180 x 90 mm
TKS 2518-11-o	141 002 01	TKS 2518-11-to	142 002 01	254 x 180 x 111 mm
TKS 2518-16-o	141 003 01	TKS 2518-16-to	142 003 01	254 x 180 x 165 mm

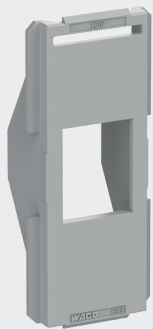


TKS 2518		Dimensions
Enclosure type	Order No	
TKS 2518-12TE	143 002 01	254 x 180 x 111 mm



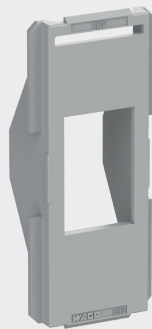
**TKS AP-L**  
144 000 01

for closing enclosure openings that are not required



**TKS AP-1**  
144 001 01

for pluggable connectors type **WINSTA® MINI 2-pole**



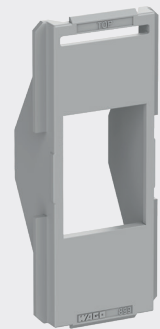
**TKS AP-2**  
144 002 01

for pluggable connectors type **WINSTA® MINI 3-pole**



**TKS AP-3**  
144 003 01

for pluggable connectors type **WINSTA® MINI 4-pole**

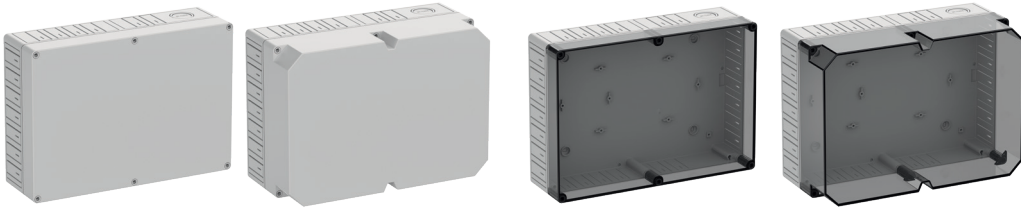


**TKS AP-4**  
144 004 01

for pluggable connectors type **WINSTA® MIDI 2-pole**

# TKS ENCLOSURES - PRODUCT OVERVIEW

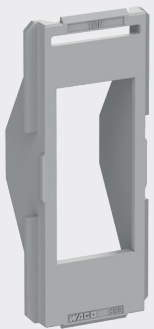




TKS 3625		TKS 3625		Dimensions
Enclosure type	Order No	Enclosure type	Order No	
TKS 3625-11-o	<b>141 012 01</b>	TKS 3625-11-to	<b>142 012 01</b>	<b>361 x 254 x 111 mm</b>
TKS 3625-16-o	<b>141 013 01</b>	TKS 3625-16-to	<b>142 013 01</b>	<b>361 x 254 x 165 mm</b>

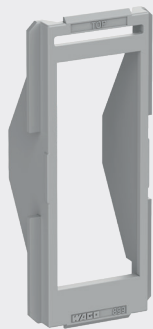


TKS 3625		Dimensions
Enclosure type	Order No	
TKS 3625-24TE	<b>143 012 01</b>	<b>361 x 254 x 111 mm</b>



**TKS AP-5**  
144 005 01

for pluggable connectors  
type **WINSTA® MIDI**  
**3-pole and**  
**MINI 5-pole**



**TKS AP-6**  
144 006 01

for pluggable connectors  
type **WINSTA® MIDI**  
**4-pole**



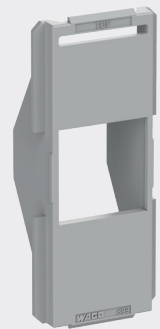
**TKS AP-7**  
144 007 01

for pluggable connectors  
type **WINSTA® MIDI**  
**5-pole**



**TKS AP-8**  
144 008 01

for pluggable connectors  
type **Telegärtner**  
**100023165**



**TKS AP-9**  
144 009 01

for pluggable connectors  
type **WINSTA® KNX**

**Günther Spelsberg GmbH + Co. KG**

Headquarters

Im Gewerbepark 1  
D-58579 Schalksmühle  
Telephone: +49 (0) 2355 892-0  
email: [info@spelsberg.de](mailto:info@spelsberg.de)  
Internet: [www.spelsberg.com](http://www.spelsberg.com)

Buttstädt factory

Vor dem Lohe 3  
D-99628 Buttstädt  
Telephone: +49 (0) 36373 98-400

Visit us at:

