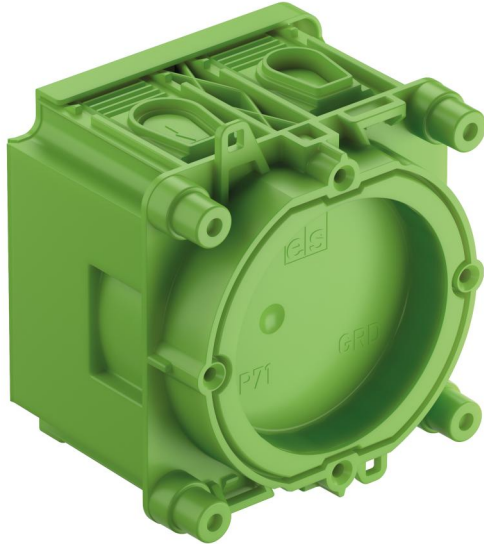


Receptacle

# P 71 GRD



## P 71 GRD

### Receptacle

Productnumber: 98404501

Dimensions: 71 x 71 x 55,5 mm

Receptacle, especially for horizontal factory finishing, 1-part, diameter 60 mm Ø, 4 screw bosses with a 60 mm screw spacing, combinable, suitable for opposing formwork, combinable with a standard spacing of 71 mm, with protection class IP30, Rated insulation voltage: 400V AC, certified by VDE (DIN EN 60670-1/-22 (VDE 0606-1/-22)), Halogen free

**with claw fixing, magnet installation, conduit adapter with Easy-Cut-Membran, sealing range M16 - M25, support spar compatible**



## Technical Data

### electrical characteristics

Rated insulation voltage AC:	400 V
Type of protection:	IP30
Suitable for:	Concrete construction
UL Type Rating:	not specified

### Dimensions

Width:	71 mm
Length:	71 mm
Height:	55.5 mm
Inner height:	51.9 mm
Weight:	0.045 kg

### Material characteristics

Halogen free:	yes
Flammability class according with UL94:	HB
Glow-wire flammability according to EN 60695-2-11:	650 °C

### mechanical properties

Type of fastening:	magnet installation
--------------------	---------------------

### Ambient conditions

max. relative humidity 40°C:	50 %
Min. ambient temperature:	-25 °C
Max. ambient temperature:	40 °C
24h ambient temperature:	35 °C

## Sales Information

EAN:	4013902597321
Packing Unit Code:	C62

## Sales Information

ETIM Class:	EC002601
Custom tariff number:	39269097

## Material

Base unit material:	Plastic
Cover material:	Polypropylene

## Certificates

Test mark:	VDE (DIN EN 60670-1/-22 (VDE 0606-1/-22))
------------	---

## Accessories

[97929901 - HM-UNI - IBT Accessories](#)

[98401601 - RA 16 - Conduit adapter](#)

[98402001 - RA 20 - Conduit adapter](#)

[98402501 - RA 25 - Conduit adapter](#)

**Cable gland**

**EasyCut-Membrane:**

4 x bis M25